

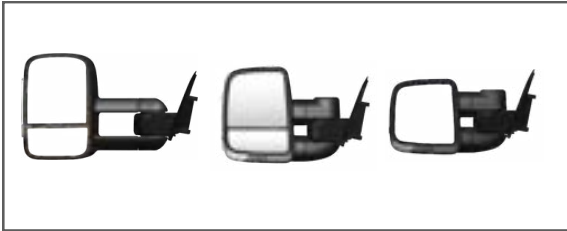


# NISSAN NAVARA D40 PATHFINDER 2005-2014

## TOWING MIRRORS INSTALLATION GUIDE

VERSION 2.3

Towing Mirrors



Power Boards



Rock Tamers



Tyre Spider



Easy Slides



Power Slides



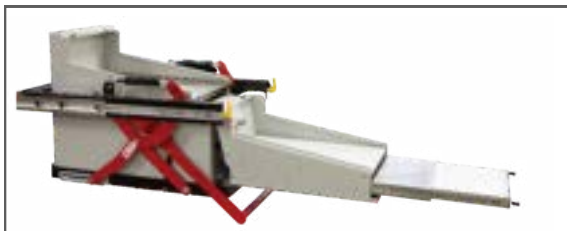
Expanda Slides



Fridge Cage



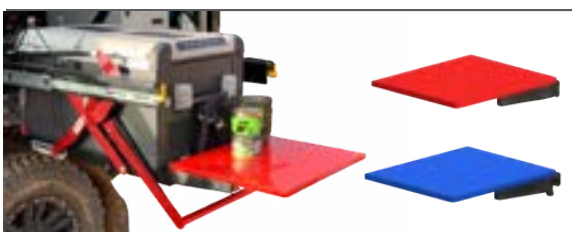
Pantry



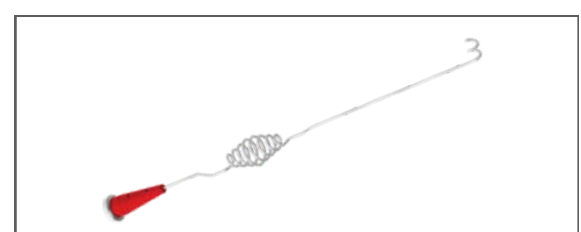
Cutlery Set



Clip on Trays



Cable Saver



## Thank you for choosing Clearview Accessories®

When it comes to road safety, having full visibility of your vehicle and your caravan, trailer or horse float is paramount. Clearview Towing Mirrors extend your field of vision when towing, changing lanes or reversing, to help see you to your destination safely. From Cape York's Telegraph Track to the Gibb River Road, Clearview Towing Mirrors are purpose-built tough for Australian conditions!

Clearview Accessories began in 2006, as a family-run business owned by entrepreneur Mike Cowan and his son-in-law, Jay Praag. In the years that followed, Mike and Jay turned their small family business with three full-time employees, into one of Australia's most respected 4WD and Touring Brands.

With a strong passion for the automotive industry, quality design and discipline in professional workmanship, our trust is built within our values of creating high quality ADR compliant designs.

From humble beginnings, Clearview Accessories has grown and today manufactures a range of unique, quality products for your next off-road adventure!

### Contact us:

#### Clearview Accessories

3 Frog Court, Craigieburn VIC 3064

Phone: (03) 8351 9933

Email: [info@clearviewaccessories.com.au](mailto:info@clearviewaccessories.com.au)

Website: [clearviewaccessories.com.au](http://clearviewaccessories.com.au)

### Find us on social media



[facebook.com/clearviewaccessories](https://facebook.com/clearviewaccessories)



[instagram.com/clearviewaccessories](https://instagram.com/clearviewaccessories)



[youtube.com/CLEARVIEWACCESSORIES](https://youtube.com/CLEARVIEWACCESSORIES)

Due to Clearview's Continuous Improvement Program, information may change without notice. Clearview takes no responsibility for the result of incorrect use of these installation instructions.

Our Range	2
Introduction	3
Getting Started	5
Before You Start	6
Maintaining Your Mirrors	7
Mirror Dimensions	8
Fitting Instructions	10-14
FAQS	15
Troubleshooting	16-17
Warranty	18

Clearview mirrors are direct replacement mirrors that mount securely in the same position as your original mirrors.

## What's in the box



*\*For illustrative purposes only*

- 1 x Left-hand side mirror & base
- 1 x Right-hand side mirror & base

**NB:** Adaptor wiring only use if RHS puddle light not functioning after install - to suit Electric + Indicators only.

**NB:** Adaptor wiring for mirrors with Electric, OR Electric + Indicators only.



*\*Only applicable in some D40 Navara / Pathfinder models.*



*\*Not applicable for manual/non-powered towing mirrors*

If anything is missing, or damaged, please do not install your new mirrors and contact us on 03 8351 9933 or via: [info@clearviewaccessories.com.au](mailto:info@clearviewaccessories.com.au)

## Tools Required:

- 1/4" Ratchet wrench with a 10mm socket, or a 10mm wrench/spanner
- Non-marring trim removal tools
- Phillips head screwdriver
- Flat Screwdriver
- 'S'-Hook



Whilst our mirrors can be installed by one person, the process is quicker and easier when an additional person is available to hold the mirror into position.



## CAUTION



## WARNING

- Read through the fitting instructions before installation of Clearview Accessories.
- Always install the accessory following the fitting instructions. Failure to do so may cause damage to the vehicle or the accessory and will void your warranty.
- Ensure all packaging materials are recycled and/or disposed of in accordance with local regulations.
- It is always recommended that this accessory is fitted by a qualified technician.
- Safely store and protect any removed vehicle components.
- Ensure all bare metal surfaces are protected using Automotive Bare Metal Primer and touch-up paint.
- Remove all metal swarf and dust from all vehicle surfaces if the surface is used for accessory installation.
- Your vehicle may be fitted with the Active Park Assist feature. You should only use this feature with your Towing Mirrors in the fully retracted, driving position.



## WARNING

### DO NOT UNFOLD MANUALLY

If your mirror is equipped with Power Fold. In some cases, the mirror head may be loose before installation, as the mirror head needs to be electrically folded and unfolded for a minimum of cycles on its first use to synchronise.

Please refrain from folding the mirror MANUALLY, as it can reduce the life span of the product.

- **NB:** This mirror is designed to be manually folded upon impact as a safety feature.



## COURTESY/PUDDLE LIGHT

Please understand that every car and every model is different and that some vehicles have different wiring options than other vehicles. We do not know the exact wiring configuration of your vehicle.

If you require the use of the courtesy/puddle light function, you will require the assistance of an Auto Electrician.

- Clearview Accessories does NOT provide this service unless it's a standard function on the vehicle.

**NB:** Where there is an electrical modification of the vehicle, a suitably licenced person should undertake the work.

- IF HARD WIRING: **ORANGE WIRE: NEGATIVE (-) | GREY WIRE: POSITIVE (+)**

## Maintaining Powder Coated Surfaces

Whilst powder coating is a lot more durable and longer-lasting than paint, it can still be affected by dust, dirt, salt water and constant exposure to the weather. For this reason, no protective powder coating is completely maintenance-free.

With the right maintenance, you can increase the life of the finish of your powder-coated surfaces:

- Harsh chemicals and solvents can damage the powder coating. Once damaged, the surface is a lot more vulnerable to fading and failure.
- We recommend regularly inspecting your powder coat and wiping any dust off with a soft cloth. Clean, good-quality microfibre cloths are recommended.
- We recommend regular washing with highly diluted mild soap and water. Use a soft towel to gently clean. Rinse and dry with another soft drying towel/chamois.
- If your powder coat is losing its shine, you can apply a thin layer of high-grade non-abrasive car wax after it's been cleaned. Wipe all the wax off once it's dried, and the powder coat should look like new again! Use a car wax brand that contains a UV blocker or UV inhibitors. Do not use compound-type waxes as they contain abrasives that can harm the powder coating.
- It's important in coastal areas to regularly clean any powder-coated surfaces as salt will stick to the coating, dulling its appearance. This can leave your powder-coated surface looking chalky.
- We don't recommend paint touch-ups to cover imperfections, as paint won't adhere to powder-coated surfaces. A local professional can quote to repair the powder coating.

## How do I maintain my Powerfold mirrors?

Under regular Powerfold operation, there shouldn't be any maintenance required; however, if it is regularly used off-road, then the mirrors may need to be maintained every 6-12 months.

- This maintenance involves pulling the mirror into the fully extended position and applying dry lubricant on the arms, not the arm covers.

## Maintaining your Chrome Mirrors

The chrome finish used on our mirror heads is a chrome-plated plastic, which provides the appearance and feel of real chrome, in a more lightweight and cost-effective material.

Weather conditions, how often they are washed and how close to the ocean you live, all play a role in the longevity of the chrome finish.

- Automatic car washes that use bristle brushes or acidic preparations can damage your chrome
- Salt and de-icers will surface pit chrome, and extra care will be required with more frequent washes to remove residue.
- We recommend washing them weekly with mild soap and water, steering clear of ammonia-based or acid solutions.
- Clean, good-quality micro-fibre cloths are recommended to wipe down the chrome surface and prevent water stains from forming
- An occasional polish with a non-abrasive chrome polish will help bring your chrome back to its original shine!

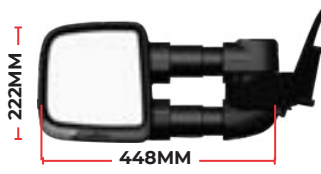
**NB:** If chrome isn't properly maintained, it can develop pitting from corrosion or lose its attractive shine. We recommend **Autosol Metal Polish** and **Autosol Metal Life Saver**.

## Compact Towing Mirrors

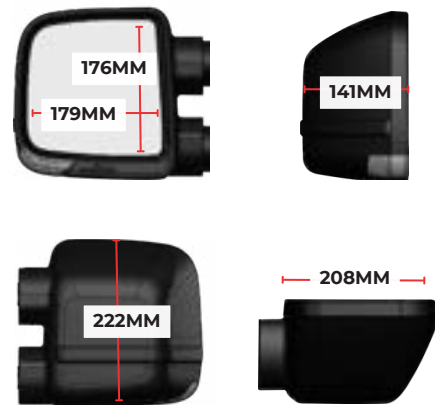
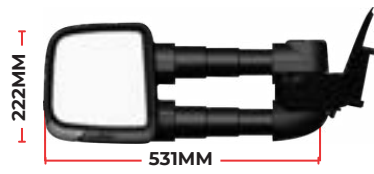
Non-Extended Standard Driving Position



Extended Towing Position

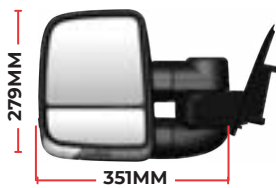


Fully Extended Towing Position

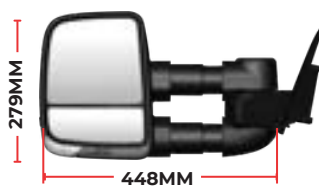


## Next Gen Towing Mirrors

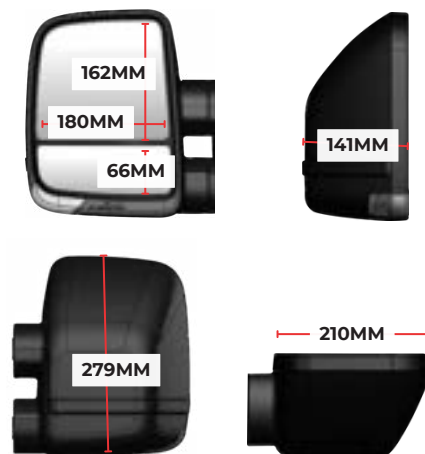
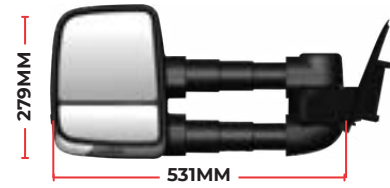
Non-Extended Standard Driving Position



Extended Towing Position



Fully Extended Towing Position





Your adventure awaits...  
Let's Begin!

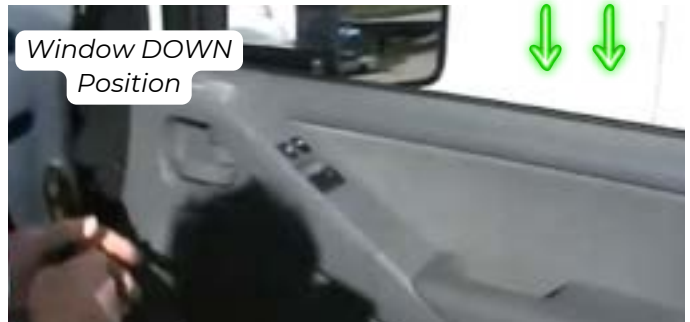
## Step 1

### Prepare vehicle and remove quarter panel trim:

Place transmission into PARK position with the handbrake ON.

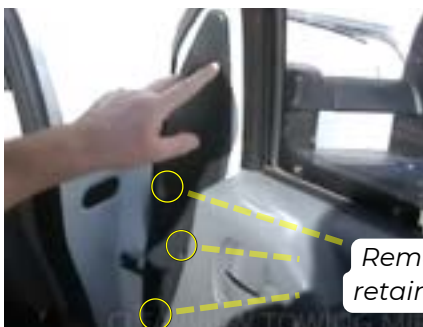
Turn ignition ON and ensure both front windows are DOWN.

Turn ignition OFF.

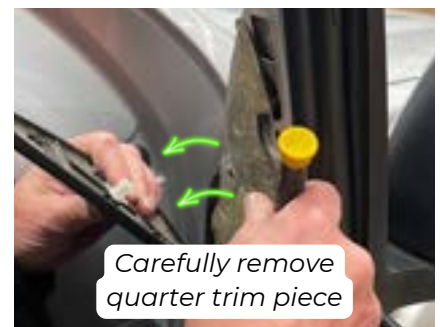


## Step 2

### Remove door trims and fasteners:

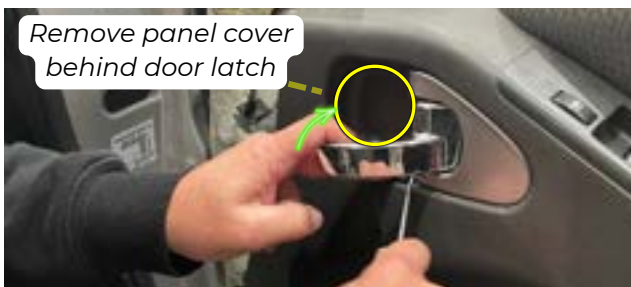


Remove trim retaining clips



Carefully remove quarter trim piece

Use a non-marring trim removal tool to remove the small retaining plugs and the quarter panel trim as highlighted. Be mindful not to scratch the trim.



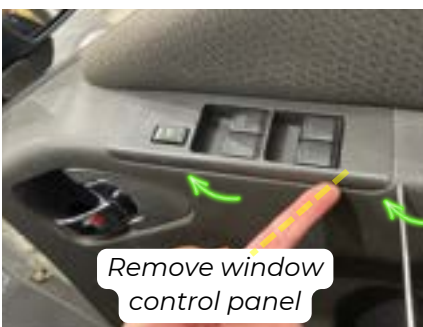
Remove panel cover behind door latch



Remove screw

Carefully use a trim removal tool to remove the door trim cover behind door latch.

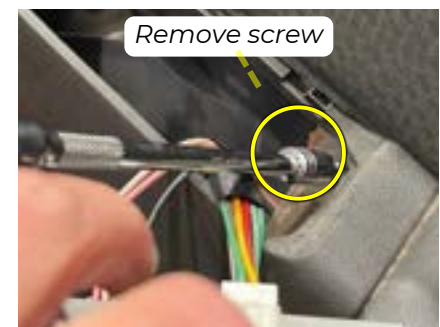
- Remove the screw behind the door latch.



Remove window control panel



Disconnect plug from factory connector



Remove screw

Remove the window control panel using a trim removal tool.

- Disconnect plug from factory connector, then remove screw as shown.

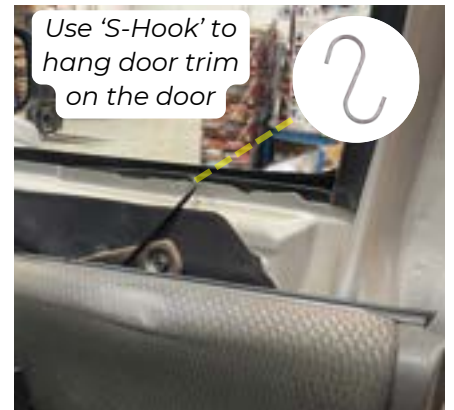
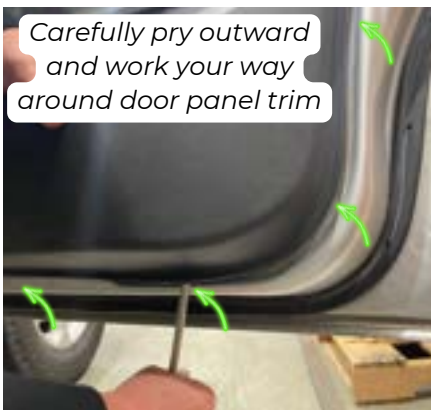
## Step 3

### Remove door trim panel:



Carefully use a trim removal tool to lift and remove the armrest trim cover.

- Remove the 2 x screws behind the door latch.



Use a trim removal tool, begin from the bottom of the door panel to carefully pry panel outwards, then work your way around the panel as highlighted.

- Lift the door trim upward and position it onto the 'S'-Hook to support the door trim during installation - be mindful of any wiring etc.

## Step 4

### Disconnect factory mirror wiring:

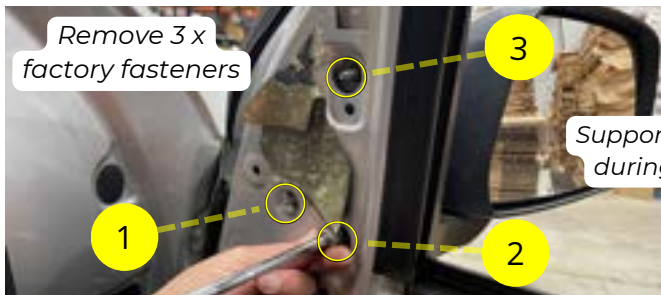


Pry back plastic dust cover slightly, free up the locating tag from door as shown.

- Unplug the factory mirror wiring plug from the connector.

## Step 5

### Remove the OEM mirrors:



Remove the 3 x factory mirror fasteners to free factory mirror from the door.

- Ensure the wiring loom is fed outward through the quarter panel.
- Re-fasten the standard fasteners back to the factory mirror and set aside.



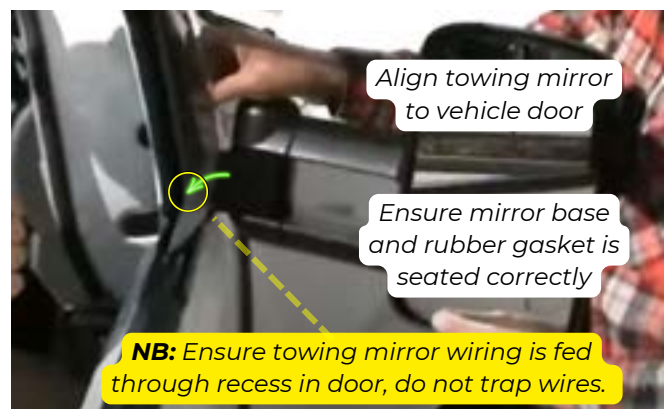
**HANDY TIP:** Keep your original OEM mirrors as back up should something happen to one of your Clearview Mirrors, necessitating the need to return it to us for repairs.

## Step 6

### Install the Clearview Towing Mirrors:

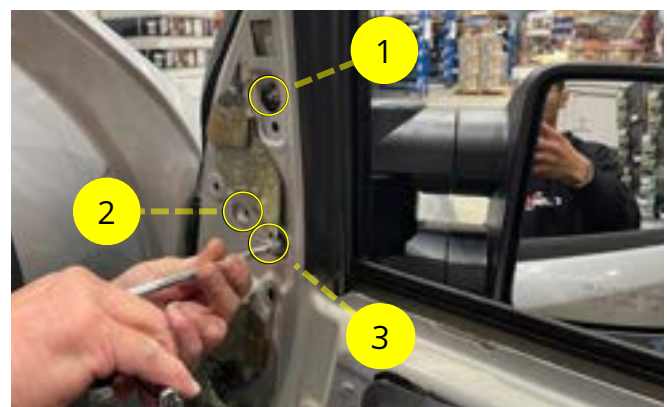
For ease of handling the towing mirror during installation, extend the mirror head to the mid-position.

- Feed the wiring loom through and keep the tension to help avoid trapping any wires in the process.
- Align your Clearview Towing Mirror to the quarter panel.



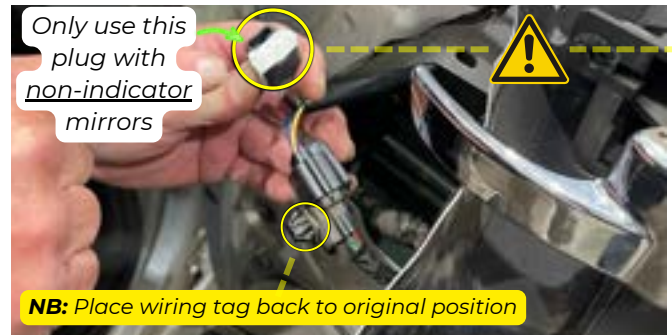
Begin to fasten the supplied 3 x 10mm Hex flange nuts.

- Hand-start the Hex flange nuts from the top stud as highlighted, followed by the bottom two studs. Ensure to avoid cross-threading of the hardware.
- Fully tighten all of the above hardware to secure the towing mirror head to the vehicle door. Tighten to torque of **11Nm**, do not over-tighten.



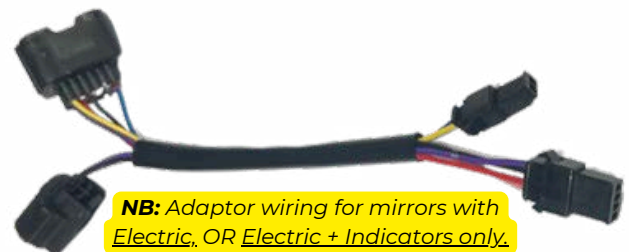
## Step 7

### Connect Clearview Towing Mirror Wiring:



Connect the towing mirror wiring plug that fits to the factory connector on the inner door as shown.

- Place wiring tag back to original position (Refer to original wiring position in previous STEP 4)
- Ensure to neatly tuck away the extra length of wiring in the door panel.
- Avoid placing wiring near any of the trim mounting points.



**IMPORTANT:** Only applicable with Non-Indicator Towing Mirrors.

- Do not use this plug if you have the indicator feature within your Clearview Towing Mirror.

## Step 9

### Test Mirrors:

Begin testing to ensure that your Clearview Mirrors are operating correctly.

- For Manual Mirrors - manually set and adjust your mirrors to your desired position.
- Test your mirror functionality to ensure they run the correct way - UP, DOWN, LEFT, RIGHT, if applicable.
- Test Indicators - Indicate LEFT, RIGHT, HAZARDS, if applicable.



**IMPORTANT:** In some variants with puddle lights, If the **RHS puddle light** fails to illuminate after installation:

- Ensure to join the spare 2-PIN wiring adapter (supplied in the kit) between the orange and grey wires.



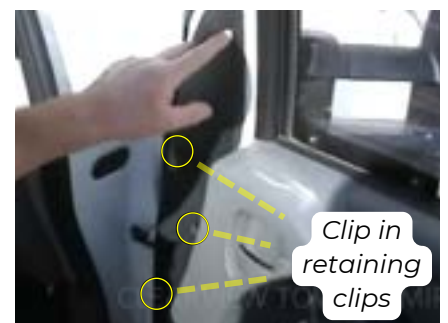
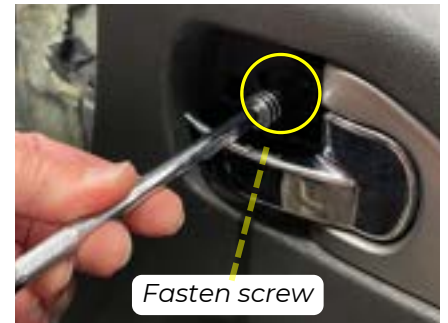
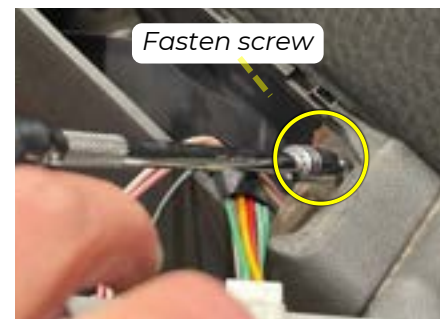
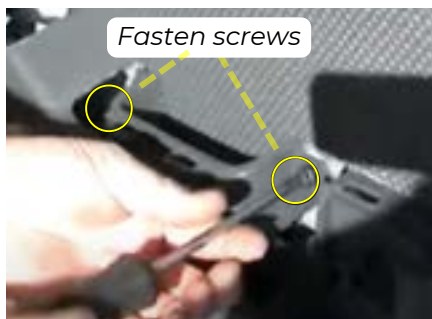
## Step 10

### Reassemble door panel and trims:

Secure door trim quarter panel pieces into their original position.

REPEAT Steps 2-3 in REVERSE order.

- Ensure not to trap any wires in the process.



Congratulations! You have now fully installed your new Clearview Towing Mirrors and are ready for your next adventure!

**Can I install Clearview mirrors myself?**

Yes! Depending on the complexity of the installation, Clearview mirrors are extremely easy to install and mount to the vehicle's original OEM mirror mounts. Depending on the vehicle's current mirror options, Clearview mirrors include plug-and-play wiring looms. Instructional videos are also available on our website ([clearviewaccessories.com.au](http://clearviewaccessories.com.au)) in the 'HOW TO' section. Clearview recommends that any installation requiring hard wiring be done by a licensed auto electrician.

**What is the fitting time?**

Depending on the complexity of the installation, the fitting will vary from vehicle to vehicle. Any installation requiring any special fittings and/or hard wiring will require longer fitting times (eg. 360° Camera fitting/calibration, any electric hard-wiring kits, OAT sensors, and any other complex installations, etc).

**NB:** Fitting times will also vary depending on the skillset or capabilities of the fitter.

Please contact Clearview Accessories if you have any questions about fitting or wiring.

**Are the telescopic arms electric?**

No. The telescopic arms are extended manually. Clearview Mirrors will only fold against the vehicle electronically, provided we make that model in Power Fold.

**Can I retrofit the original mirror base to the Next Gen or Compact mirrors?**

No. The cost of converting the mirrors to suit the new models is not worth it. We recommend either selling your Original mirrors privately or through the 'Pre-Loved' section (Within the 'Shop' menu category) of our website and purchasing the new Next Gen or Compact mirrors brand new.

**Can I add an indicator later if I didn't order the mirrors with an indicator?**

Yes, you can. But it comes at a greater expense than if you were to order the mirrors with indicators. Installation of the mirror head will require a longer time and more parts to dismantle.

**Are spare parts available?**

Yes. We have a list of spare parts for all our mirrors on our website. Our dealers also have a list of all our spare parts. If you cannot find the parts that you require, please contact Clearview Accessories, or any of our dealers to assist you with your enquiry.

### How do I maintain my mirrors?

We recommend that Clearview Mirrors are lubricated every 6-12 months, when the arms feel stiff during use, or after any big trip to ensure longevity of your Clearview Towing Mirrors!

This maintenance includes pulling the mirror into the fully extended position and applying the dry lubricant on the arms. We recommend using WD-40 Specialist® Dry Lubricant



Avoid any waxy lubricants as they can attract dirt and grit.

**SCAN THE QR CODE  
AND VIEW OUR VIDEO  
DEMONSTRATING**

How to lubricate the arms  
on Clearview Towing Mirrors



### I have just installed my new Powerfold mirrors and the mirror heads appear 'loose'/floppy'.

After the mirrors are installed, they need to be cycled a few times. This will allow all the internal mechanisms to set and find the proper positions.

- If the mirror head is still loose/floppy after they're cycled, please contact Clearview Technical Support.

### I have installed my Powerfold Mirrors and have noticed that the Passenger's side mirror is closer to the vehicle compared to the Driver's side; Is this normal?

This is entirely normal. In most vehicles, the mirror housings are angled differently between the driver's and passenger's sides.

- This is because when you sit in the car, the mirrors are positioned from/to the driver's position (which is off-centre), so generally, the passenger side mirrors are closer to the vehicle body to allow you to have the same field of vision in the mirror.

**One of my Powerfold Mirrors folds/opens quicker than the other one; Is this normal?**

Generally, the passenger mirror will fold/open quicker, as it is closer to the vehicle body and therefore travels a shorter distance compared to the driver's side mirror.

*(Refer to the previous question in regards to why the mirrors are angled differently.)*

**My mirrors have been knocked out of Driving Position; how do I fix it?**

Press the powerfold switch once. This should initiate the powerfolding motors and the mirrors should start folding inwards. Wait until the mirrors are fully folded in and have stopped moving, then press the powerfold switch again. This should now bring your mirrors back out to normal driving position. Check and see if the mirrors are locked into position firmly. If the mirror is not returning to its normal position, please contact Clearview Technical Support.

- **NB:** *The Powerfold mirrors can fold manually, however, the manual fold mechanism is only designed as a safety feature. Throughout the lifespan of the product, manual folding will occur, such as people walking into them or accidentally bumping them. The internal mechanisms are designed to withstand this accidental manual folding during normal usage. It is not recommended for the mirrors to be manually folded constantly, as it will prematurely wear out the internal folding mechanisms and reduce the lifespan of the product.*

**My mirror was knocked out of the driving position. When I cycled them, there is a clicking sound and the mirror appears to have 'jumped'; Are my mirrors damaged?**

When the Powerfold mirror is being cycled to find its original driving position, it will 'jump' back into position and make an audible click sound when mechanisms realign. Once the mirrors have found the original position and have been cycled, check for looseness and mirror movement. If they feel firm, then the mirrors have not been damaged. If they still feel loose, please contact Clearview Technical Support.

**Why don't my mirrors fold all the way in/out when I press the switch?**

The circuit breaker inside the mirror activates when the electrical current increases due to resistance. If the mirror stops before it reaches the folded in/out position, that means something is adding resistance while the mirrors are folding, hence activating the circuit breaker before it has reached the desired position. Please contact Clearview Technical Support.

Clearview Towing Mirrors® are full replacement towing mirrors designed and manufactured to the highest quality standards to replace your vehicle's standard side mirrors. We stand behind our Next Gen and Compact Towing Mirrors with a 3-year Manufacturer's Warranty and 7-year Parts Warranty. We stand behind our Original Towing Mirrors and Classic Towing Mirrors with a 12-Month Manufacturer's Warranty and a 3-year Parts Warranty

Please ensure that your receipt is kept in a safe place. A receipt will be required to make a warranty claim on any Clearview product. If we determine that a Clearview Towing Mirror is defective in materials or workmanship during the Warranty, we will either repair or replace the product. Repair or replacement is solely at the discretion of Clearview Accessories.

Please ensure that you fit the Clearview products in accordance with the product information provided and all relevant vehicle safety and compliance laws; and use the Clearview product for the purpose for which it was originally designed. This warranty does not apply to failure or damage caused by incorrect or faulty fitment, accidental or intentional damage, alteration, acts of nature, vandalism, collision, road hazards or adverse conditions, misuse, abuse or neglect of the Clearview product, including improper repair or maintenance or failing to repair and maintain the product, failure of other products, operation of the product outside of its environmental or technical specifications, or repair or modification carried out by anyone other than Clearview Accessories®. No charges will be accepted for external labour or materials without the prior advice or clearance from the Clearview claims team. Clearview Accessories® warranty does not cover any scratches or chips.

Clearview Towing Mirrors are designed to be vehicle-specific. When purchasing Clearview Towing Mirrors, carefully select your product according to ADR compliance laws and vehicle specifications. Clearview Towing Mirrors are not designed to be modified for convenient use on alternative vehicles. Alteration, modification, or manipulation of our products will void all warranty with Clearview Accessories.

All claims under this warranty should be lodged through our website warranty section <https://www.clearviewaccessories.com.au/about/warranty/> with the detail of the fault, proof of purchase, proof of identification and vehicle fitment details where relevant. If your claim is accepted for defects in material or workmanship Clearview will, at its discretion, offer to repair, replace parts, or return and refund.

Our goods come with guarantees that cannot be excluded under the Australian Consumer Law. You are entitled to a replacement or refund for a major failure and for compensation for any other reasonably foreseeable loss or damage. You are also entitled to have the goods repaired or replaced if the goods fail to be of acceptable quality and the failure does not amount to a major failure. In the event of a minor failure, the company reserves the right to choose to repair or replace the product.

Clearview Towing Mirrors® | ABN: 59 140 145 393 | 3 Frog Court, Craigieburn VIC 3064  
Phone: (03) 8351 9933 | Email: [info@clearviewaccessories.com.au](mailto:info@clearviewaccessories.com.au)



**Head Office**

3 Frog Court, Craigieburn  
VIC 3064, Australia  
(03) 8351 9933

**QLD Office**

Unit 1/49 Doherty Street, Brendale  
QLD 4500, Australia  
(07) 3204 7693

[info@clearviewaccessories.com.au](mailto:info@clearviewaccessories.com.au)

[clearviewaccessories.com.au](http://clearviewaccessories.com.au)

